

## Clifton Close



### CLIFTON CLOSE

BICESTER

Plot 18

beds

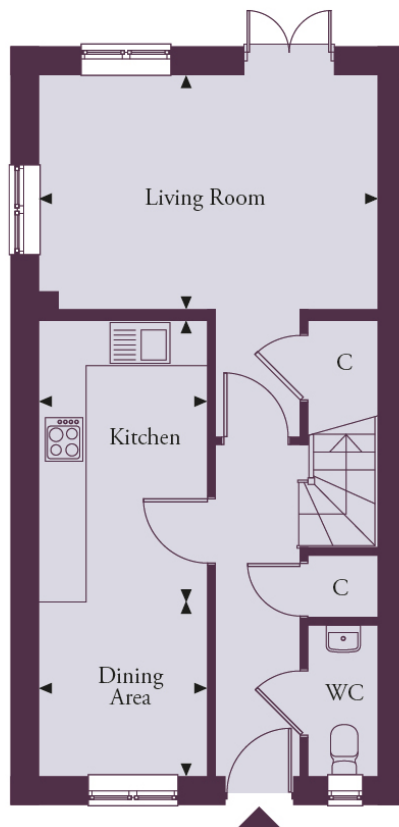
£379,995

Available



Taking inspiration from Oxfordshire's county flower, the snake's head fritillary, with its beautiful natural form and chequered pattern, Clifton Close represents a meeting of rural grace with sleek urban living to offer the very best of town and country living.

# House 18 - Ground Floor



Ground floor

Numbers 11\*, 14, 15\*, 18, 19\*, 22, 26, 29\*, 30, 33\*. \*Numbers 11, 15, 19, 29 and 33 are handed.

---

Kitchen 3.62m x 2.22m | 11'10" x 7'3"

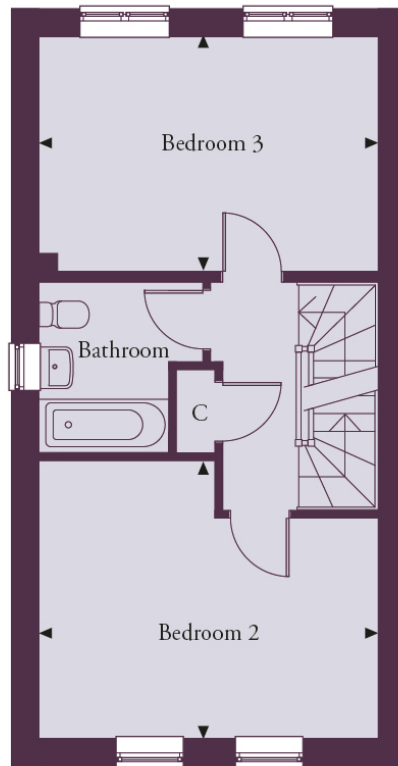
---

Dining Area 2.48m x 2.22m | 8'1" x 7'3"

---

Living Room 4.50m x 3.14m | 14'9" x 10'3"

# House 18 - First Floor



First floor

Numbers 11\*, 14, 15\*, 18, 19\*, 22, 26, 29\*, 30, 33\*. \*Numbers 11, 15, 19, 29 and 33 are handed.

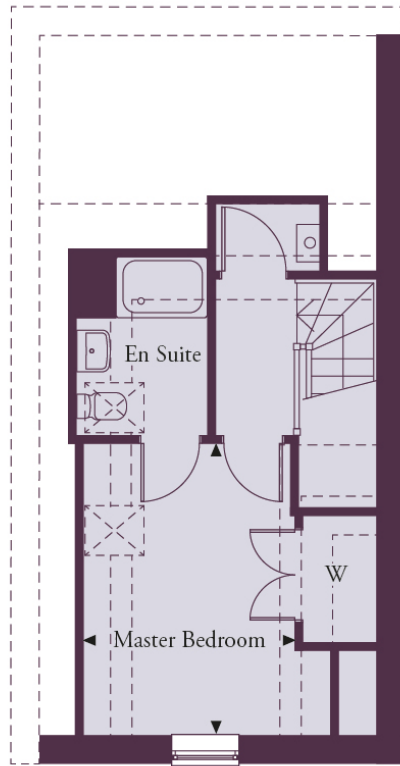
---

Bedroom 2 4.50m x 3.70m | 14'9" x 12'1"

---

Bedroom 3 4.50m x 3.14m | 14'9" x 10'3"

## House 18 - Second Floor



Second floor

Numbers 11\*, 14, 15\*, 18, 19\*, 22, 26, 29\*, 30, 33\*. \*Numbers 11, 15, 19, 29 and 33 are handed.

---

Master Bedroom 3.91m x 3.32m | 12'9" x 10'10"

---

Total Area 111 sq m | 1,196 sq ft

