

## Clifton Close



### CLIFTON CLOSE

BICESTER

Plot 1

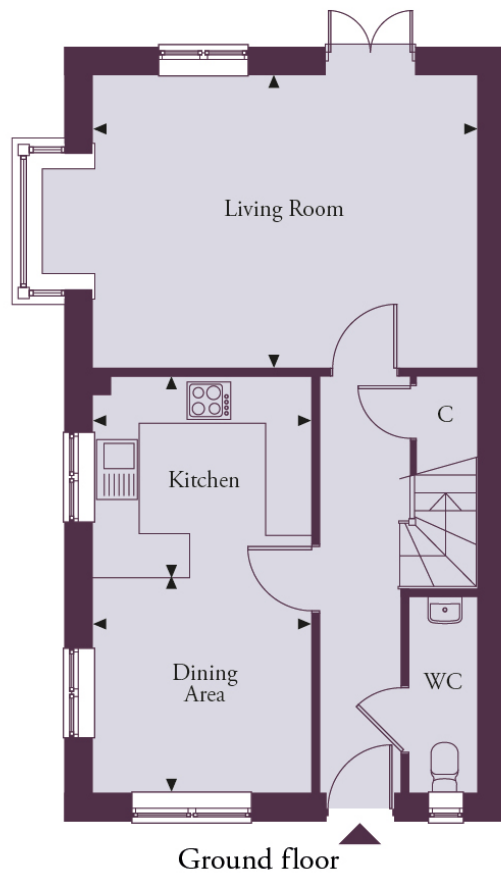
4 beds

Sold



Taking inspiration from Oxfordshire's county flower, the snake's head fritillary, with its beautiful natural form and chequered pattern, Clifton Close represents a meeting of rural grace with sleek urban living to offer the very best of town and country living.

# House 1 - Ground Floor



Numbers 1, 9\*. \*Number 9 is handed.

---

Kitchen 2.91m x 2.70m | 9'6" x 8'10"

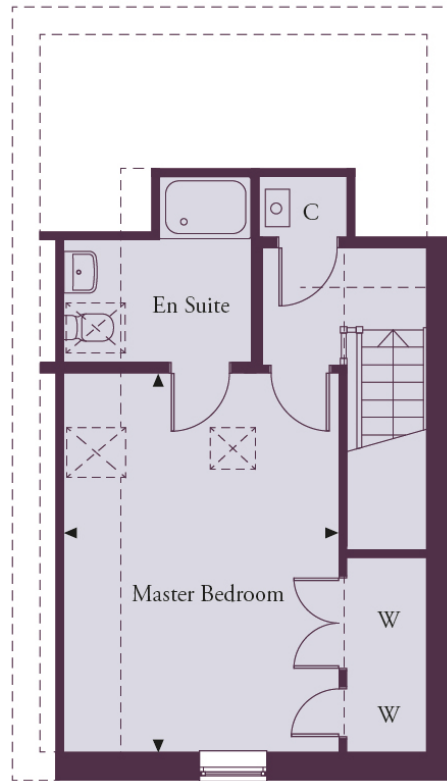
---

Dining Area 2.91m x 2.86m | 9'6" x 9'4"

---

Living Room 5.15m x 3.92m | 16'9" x 12'10"

# House 1 - Second Floor



Second floor – Number 1

Number 1

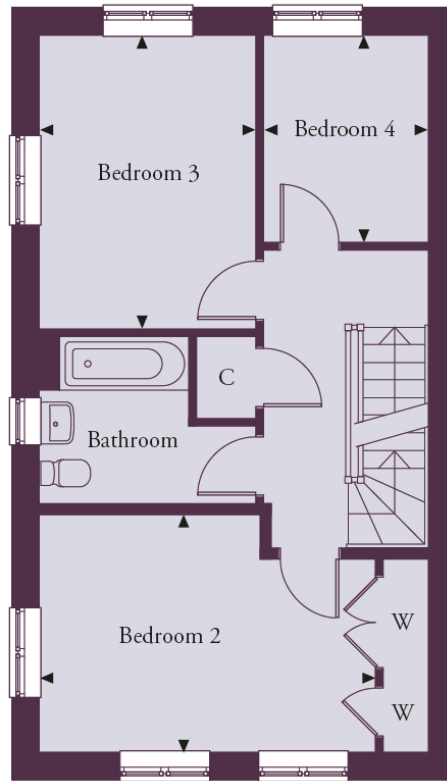
---

Master Bedroom 2.77m x 2.17m | 9'1" x 7'1"

---

Total Area 137.7 sq m | 1,482 sq ft

# House 1 - First Floor



First floor

Numbers 1, 9\*. \*Number 9 is handed.

---

Bedroom 2 4.47m x 3.19m | 14'8" x 10'5"

---

Bedroom 3 3.92m x 2.87m | 12'10" x 9'5"

---

Bedroom 4 2.77m x 2.17m | 9'1" x 7'1"

