

Clifton Close



CLIFTON CLOSE

BICESTER

Plot 3

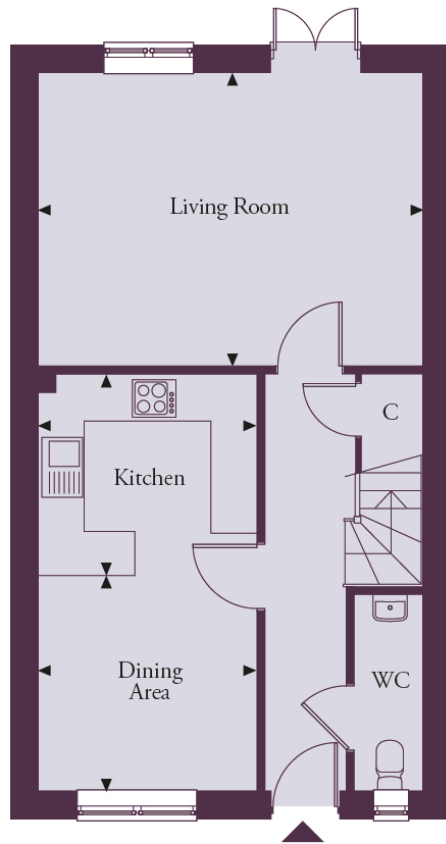
beds

Sold



Taking inspiration from Oxfordshire's county flower, the snake's head fritillary, with its beautiful natural form and chequered pattern, Clifton Close represents a meeting of rural grace with sleek urban living to offer the very best of town and country living.

House 3 - Ground Floor



Ground floor

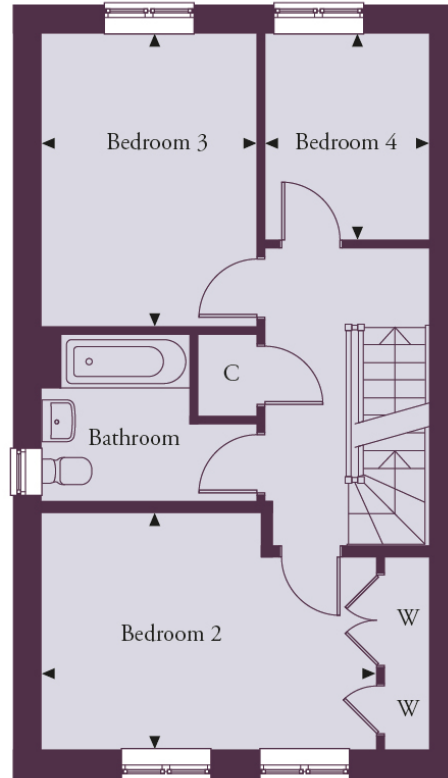
*Number 3 is handed.

Kitchen 2.91m x 2.70m | 9'6" x 8'10"

Dining Area 2.91m x 2.86m | 9'6" x 9'4"

Living Room 5.15m x 3.92m | 16'10" x 12'10"

House 3 - First Floor



First floor

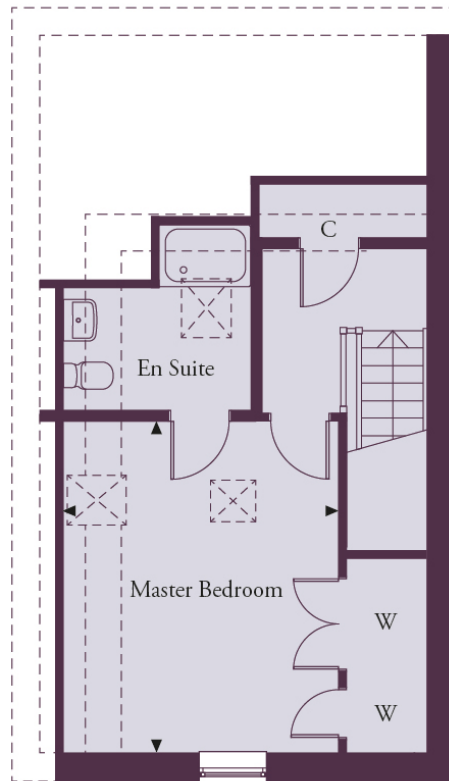
*Number 3 is handed.

Bedroom 2 4.47m x 3.19m | 14'8" x 10'5"

Bedroom 3 3.92m x 2.87m | 12'10" x 9'5"

Bedroom 4 2.77m x 2.17m | 9'1" x 7'1"

House 3 - Second Floor



Second floor – Numbers 3, 5, 6

*Number 3 is handed.

Master Bedroom 4.43m x 4.00m | 14'6" x 13'1"

Total Area 136 sq m | 1,463 sq ft

