

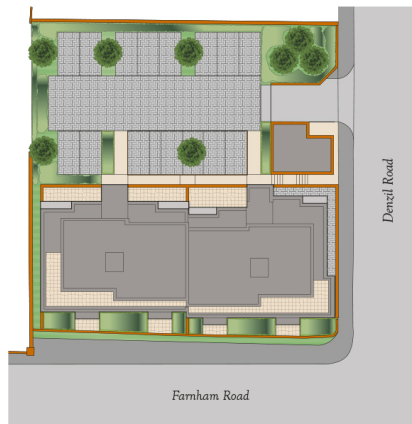
Queen's Place



Apartment 9

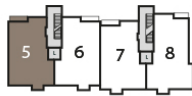
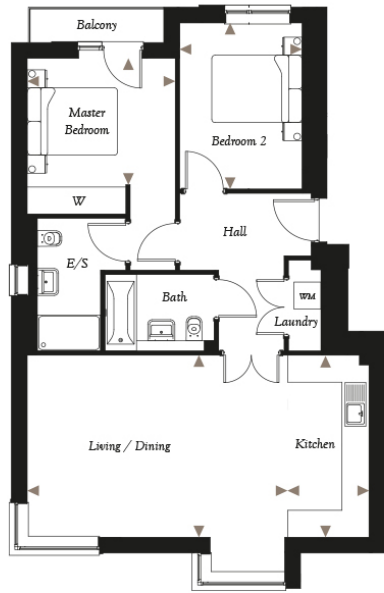
2 beds

Sold



Vanderbilt Homes presents Queen's Place, fourteen two bedroom apartments, each with their own parking in luxury development in Guildford, Surrey. Boasting excellent links to the City.

Apartment 9 - First Floor



Living/Dining 5.77m x 4.05m | 18'11" x 13' 3"

Kitchen 4.05m x 1.80m | 13'3 x 5'11"

Master Bedroom 3.28m x 2.86m | 10'9" x 9'5"

Bedroom 2 3.28m x 2.86m | 10'9" x 9'5"

