

The Belmonts

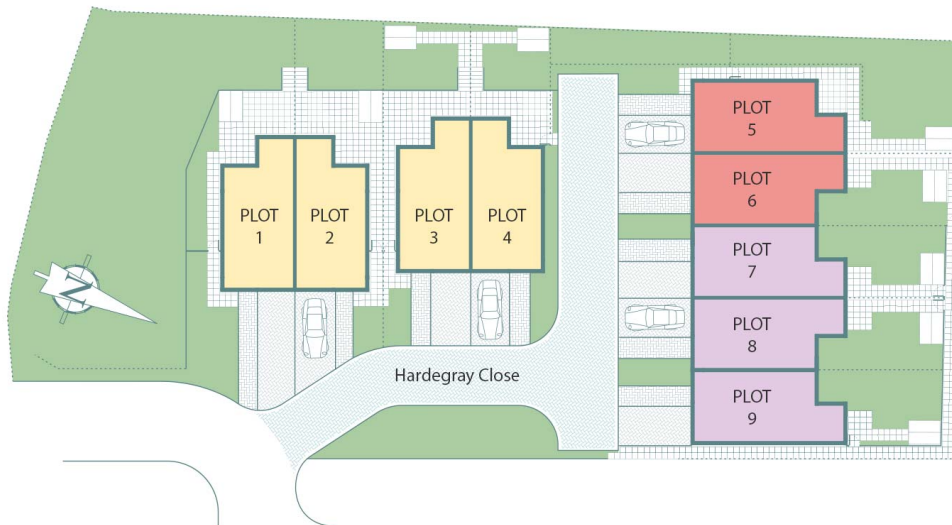
THE
BELMONTS

SUTTON · SM2

Home 5

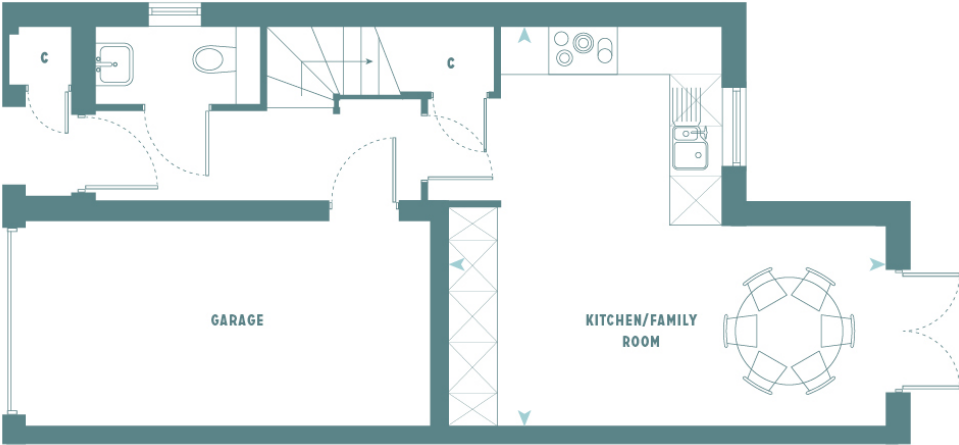
4 beds

Sold



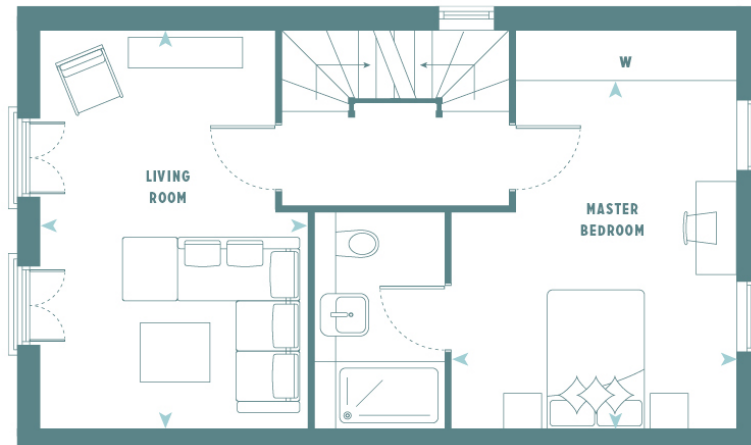
Found on a quiet close, moments from Sutton town centre, this exclusive collection of just nine 4 bedroom townhouses is a rare development of new family homes in Sutton. Set over three floors and benefiting from an integral garage and drive, each townhouse has been finished to Vanderbilt Homes' exemplary standards – combining contemporary style with traditional quality.

Ground Floor



Kitchen/Family Room 5.68 x 5.18m | 18'8" x 17'1"

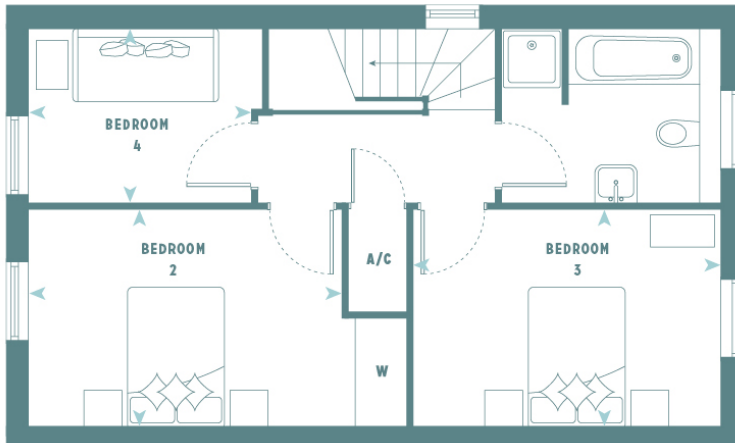
First Floor



Living Room 3.44 x 5.18m | 11'2" x 17'1"

Master Bedroom 3.70 x 4.58m | 12'2" x 15'0"

Second Floor



Bedroom 2 4.08 x 2.82m | 13'5" x 9'2"

Bedroom 3 4.02 x 2.82m | 13'1" x 9'2"

Bedroom 4 2.88 x 2.25m | 9'5" x 7'5"

