

## Tudor Court



---

Home 6

---

5 beds

---

£1,250,000

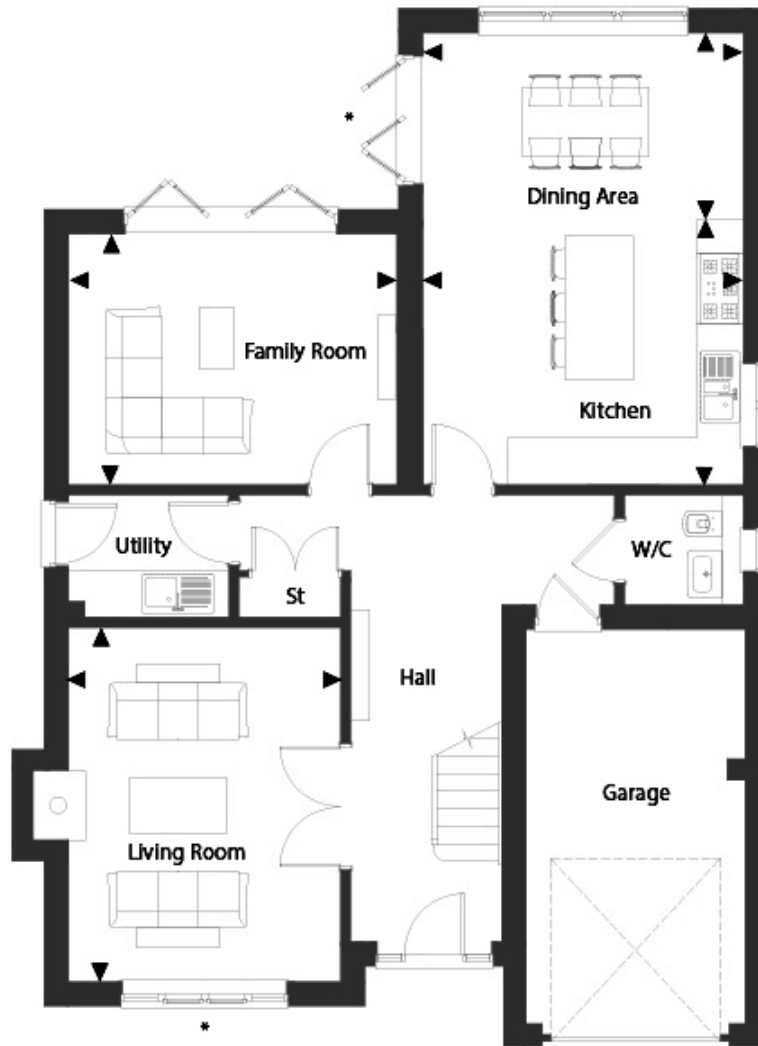
---

Available



Welcome to Tudor Court, an exclusive collection of nine, 5 bedroom detached homes set in the beautiful Buckinghamshire village of Stoke Poges, near Gerrards Cross. These traditionally built family homes offer the best of spacious country living, only a short distance from London.

# Ground Floor



---

Kitchen 4.46m x 3.70m | 14'8" x 12'2"

---

Dining Area 4.46m x 2.60m | 14'8" x 8'6"

---

Family Room 4.57m x 3.49m | 15'0" x 11'5"

---

Living Room 4.93m x 3.74m | 16'2" x 12'3"

# First Floor



---

Master Bedroom 4.15m x 3.58m | 13'7" x 11'9"

---

Dressing Area 2.90m x 1.74m | 9'6" x 5'9"

---

Bedroom 3 3.79m x 2.90m | 12'5" x 9'5"

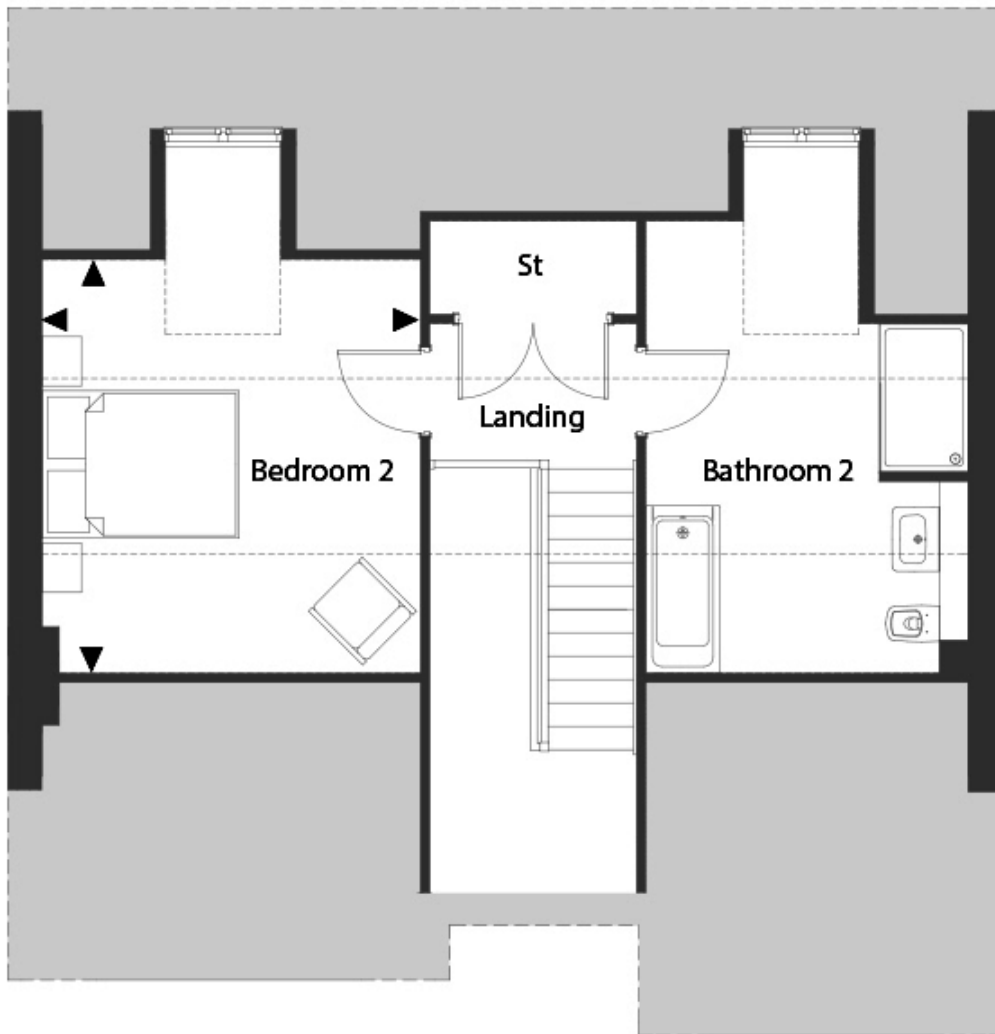
---

Bedroom 4 3.79m x 3.24m | 12'5" x 10'8"

---

Bedroom 5 3.30m x 3.22m | 10'10" x 10'7"

## Second Floor



---

Bedroom 2

---

4.20m x 3.84m | 13'9" x 12'7"

