

Tudor Court



Home 6a

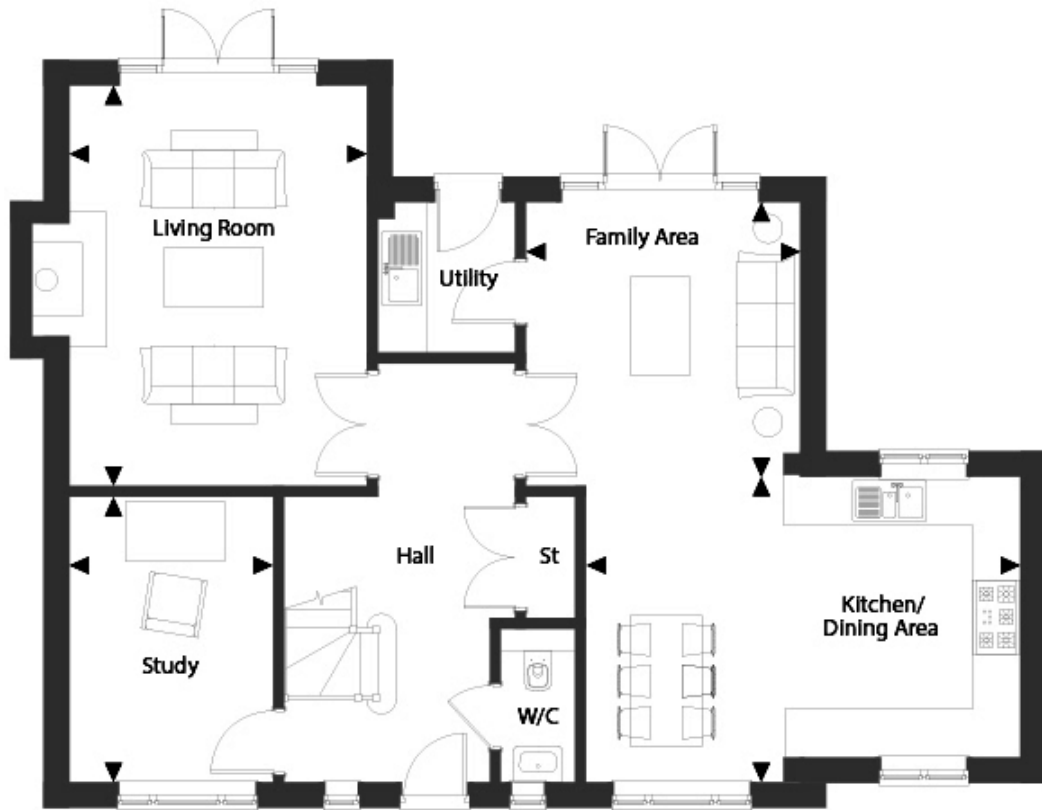
5 beds

Sold



Welcome to Tudor Court, an exclusive collection of nine, 5 bedroom detached homes set in the beautiful Buckinghamshire village of Stoke Poges, near Gerrards Cross. These traditionally built family homes offer the best of spacious country living, only a short distance from London.

Ground Floor



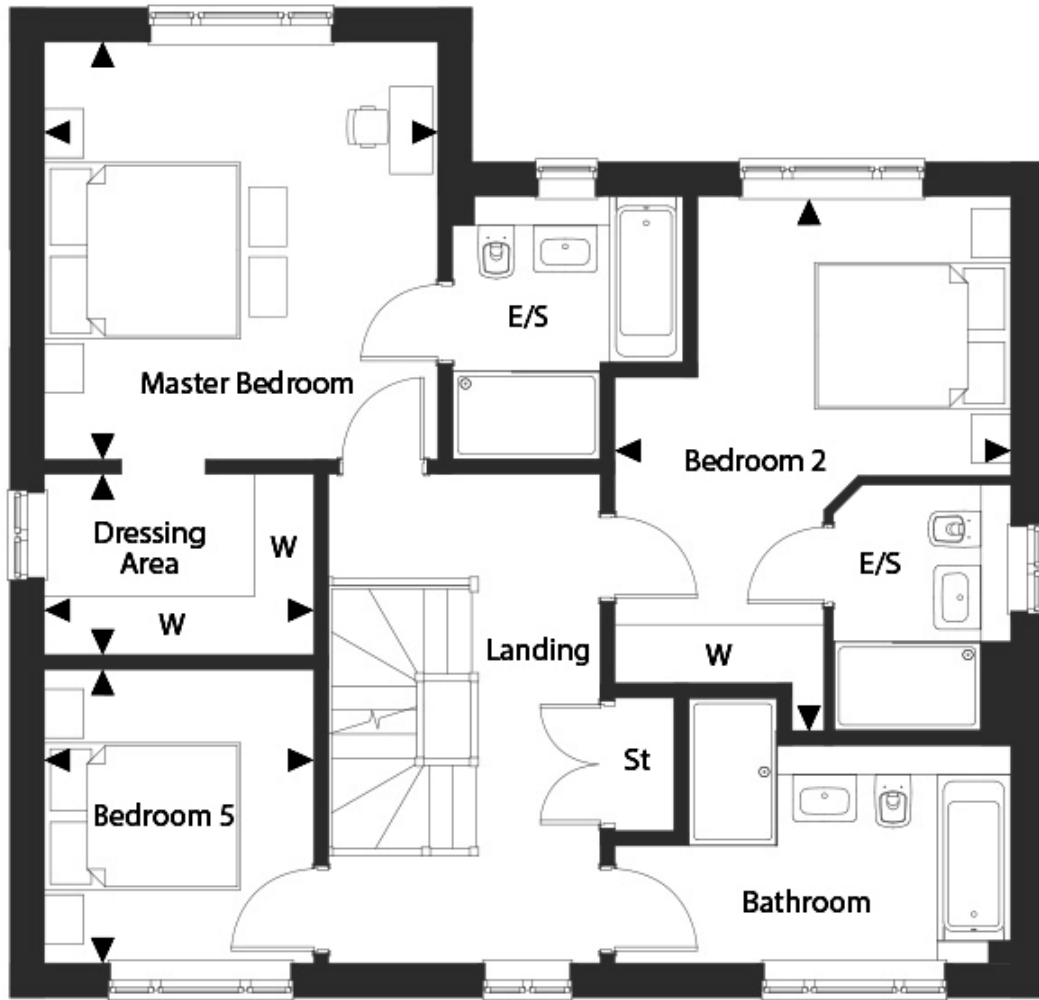
Kitchen/Dining Area 5.92m x 3.79m | 19'4" x 12'4"

Family Area 3.70m x 3.70m | 12'2" x 12'2"

Living Room 5.40m x 4.01m | 17'7" x 13'1"

Study 3.85m x 2.75m | 12'6" x 9'0"

First Floor



Master Bedroom 4.26m x 4.01m | 13'9" x 13'1"

Dressing Area 2.75m x 1.85m | 9'0" x 6'1"

Bedroom 2 5.46m x 4.09m | 17'9" x 13'4"

Bedroom 5 3.00m x 2.75m | 9'8" x 9'0"

Second Floor



Bedroom 3 4.76m x 3.72m | 15'6" x 12'2"

Bedroom 4 4.76m x 2.79m | 15'7" x 9'2"

